



LINO[®]

**PRODUCT
CATALOGUE**



VINYL FLOOR COVERINGS

www.fatrafloor.com

fatra



608 mm

1500 mm

2000 mm

Content

Who we are	6
Sustainability first	8
Membership and Certification	9
Modern production technologies	10
Surface structure	11
SILVER block - Antibacterial activity of PUR varnish	
Heterogeneous floor coverings	12
DOMO	14
NOVOFLOR STANDARD VIRGO	16
NOVOFLOR STANDARD WEGA	18
NOVOFLOR EXTRA GRIT	20
NOVOFLOR EXTRA TAURI	22
NOVOFLOR EXTRA MARS	24
NOVOFLOR EXTRA COMET	26
NOVOFLOR EXTRA SPARKLE	28
NOVOFLOR EXTRA COMFORT	30
NOVOFLOR EXTRA WOOD	32
NOVOFLOR EXTRA VARIO	34
DUAL	36
NOVOFLOR EXTRA AMOS	38
Special homogeneous floor coverings	41
GARIS, GARIS SD - 2 000 mm	43
GARIS, GARIS SD - 1 500 mm	45
ELEKTROSTATIK A - DYNAMIK A	47
ELEKTROSTATIK X - DYNAMIK X	49
Homogeneous floor coverings	51
PRAKTIK	53
Wall covering	55
MODUL	57
Accessories	58
Shade cards	59
Area of application	60
Classification	61
Packing	62
Installation and maintenance instructions	63
Technical data	64



Commercial and office floorings



School and kindergarten floorings



Hospital and laboratory floorings



Industrial hall floorings



Hotel and restaurant floorings



Household floorings

Who we are

The history of Fatra, a. s. dates back to 1935, when it was founded on solid of Bata foundation. Over the course of our operations, we have adapted to modern trends and, thanks to innovation and new technologies, we are now one of the world's leading plastics processors and an integral part of the European plastics industry.

Our most valuable resource is our people, who drive the company. Together, we form one large team of more than 1,250 employees that creates cutting-edge products and specialised customer solutions that include not only manufacturing, but also consulting services, research and development.

More than 70% of our production goes abroad. We operate two production centres in Central Europe with state-of-the-art technologies, where we process PVC, PE, PP, EVAC and PET raw materials.

Our products can be found every day at almost every step; in the construction, healthcare, consumer, automotive, electrical, food, haberdashery and footwear industries.

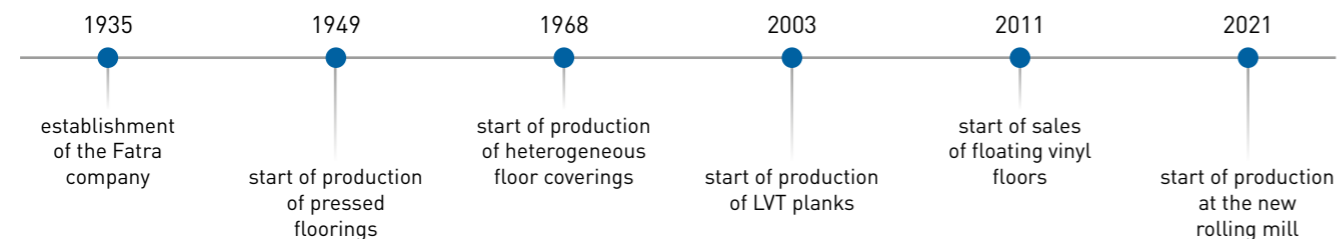
Fatra strives to fulfil the vision of the Integrated System Policy by achieving and maintaining a high level of product and service quality, environmental protection and occupational health.

The first flooring materials were produced in Fatra more than 70 years ago. This makes us not only one of the oldest and most experienced companies in Europe, but also in the world. We develop, design and create innovative design products that find their application in both the commercial and residential sectors and that meet the strictest standards for a healthy and clean indoor environment.

The LINO Fatra PVC floor coverings and accessories now offer a wide range of options for every project. In our portfolio, you will also find solutions for specific spaces to withstand daily intensive loads that are easy to maintain and, last but not least, look and feel good. It is the floor that creates the basic visual element of any interior.

We believe that our new collection of homogeneous and heterogeneous floor coverings, wall coverings and accessories will be the basis for inspiring every customer and satisfying their needs.

Quality based on history



250+

partners

52

countries

3

continents



Sustainability first

Sustainability is not just a word for us, it is a fundamental element of our business. We see it as a long-term commitment to be better at everything we do.

We have a long-standing commitment to protecting the environment and we undertake annual activities to reduce the carbon footprint of our products. These activities include, among others, reducing water and energy consumption in the production of our products. We are gradually installing renewable energy generation equipment and using secondary energy sources.

We place great emphasis on the professional development of our employees. However, we develop not only ourselves, but also our surroundings. We cooperate in the economic, cultural, social and sporting development of the region.

Fatra floors for your future

Our floor coverings guarantee an attractive modern look, high functionality and quality combined with a long service life. By choosing our floors, you not only get a quality product to suit your needs, but also a product designed with respect for the environment, taking into account key aspects of sustainability. You also share our values and attitude towards our planet and the life on it.

- When developing products, we conduct life cycle assessments (LCA) of their environmental impact.
- We have an Environmental Product Declaration (EPD) for our floor coverings, which documents the environmental credentials of our products from their inception to their disposal.
- All the raw materials we use are compliant with the REACH chemical legislation and the legislation applicable to construction products.
- We use phthalate-free flooring technology.
- The proportion of our in-house recycled materials in the production of flooring underlayers is up to 80%.
- The anti-slip and antibacterial treated PUR layer guarantees the safety and high hygiene standard of our floor coverings.
- All our floors are characterised by low emissions of volatile organic compounds (VOC), which has been verified by the relevant institutions in the Czech Republic and abroad:
 - State Institute of Health Prague
 - German Institute for Building Technology (DIBt)
 - Eurofins Product Testing Denmark A/S Institute.



Membership and Certification



Bureau Veritas

Environmental protection has long been a major focus of our attention. We have a certified quality system according to ČSN EN ISO 9001:2016 and an environmental management system according to ČSN EN ISO 14001:2016.



Responsible Care

We are guided by the principles of the Responsible Care programme, in which, as a member of the Chemical Industry Association of the Czech Republic, we undertake to manage our activities in such a way as to ensure a high level of sustainable development by responsibly improving the safety of our facilities, product transportation, human health and environmental protection. Thanks to our long-term compliance with these criteria, we have been granted the prestigious "Sustainable Development Award".



VinylPlus

We are a member of VinylPlus. We are making a long-term commitment to sustainability in the PVC industry. The main objective is to promote a circular economy and more efficient use of resources.



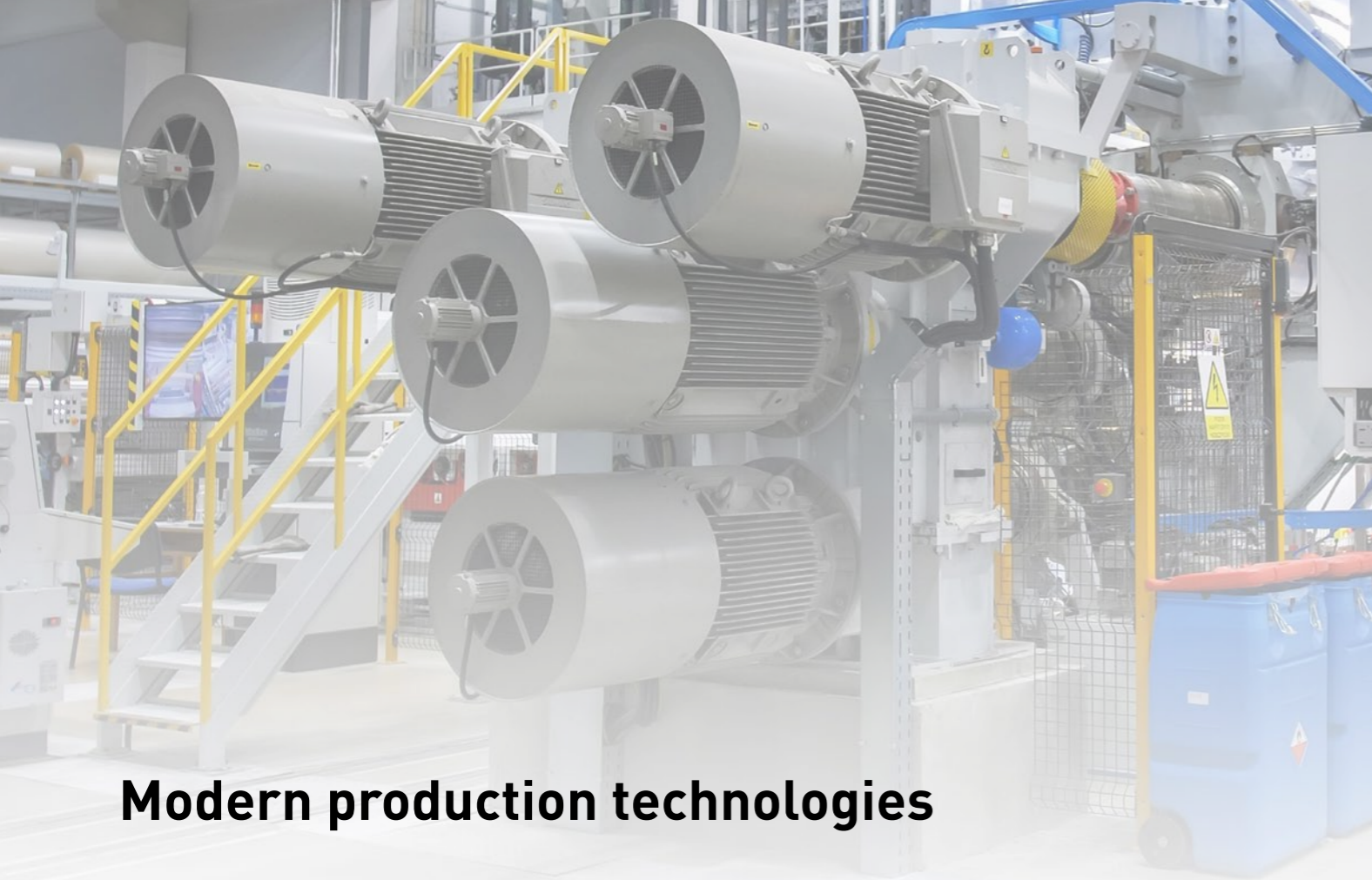
EPD

We have developed an Environmental Product Declaration, which is an independently verified and registered document that declares the environmental impact of products throughout their life cycle.



Cleanroom

Our Electrostatic A, Dynamik A and Garis SD floor coverings meet the most stringent conditions for use in cleanrooms. Suitability for use in this environment is guaranteed by the renowned German Fraunhofer IPA Institute, which has awarded us Cleanroom Suitable Materials certification after extensive testing.



Modern production technologies

Our goal is to become an even more modern and automated company. In 2021, we started production at our new rolling mill, expanding not only our production capacity but also the breadth of our product portfolio.

Using European manufacturing technologies, we offer the highest quality and design not only for commercial but also for residential solutions.

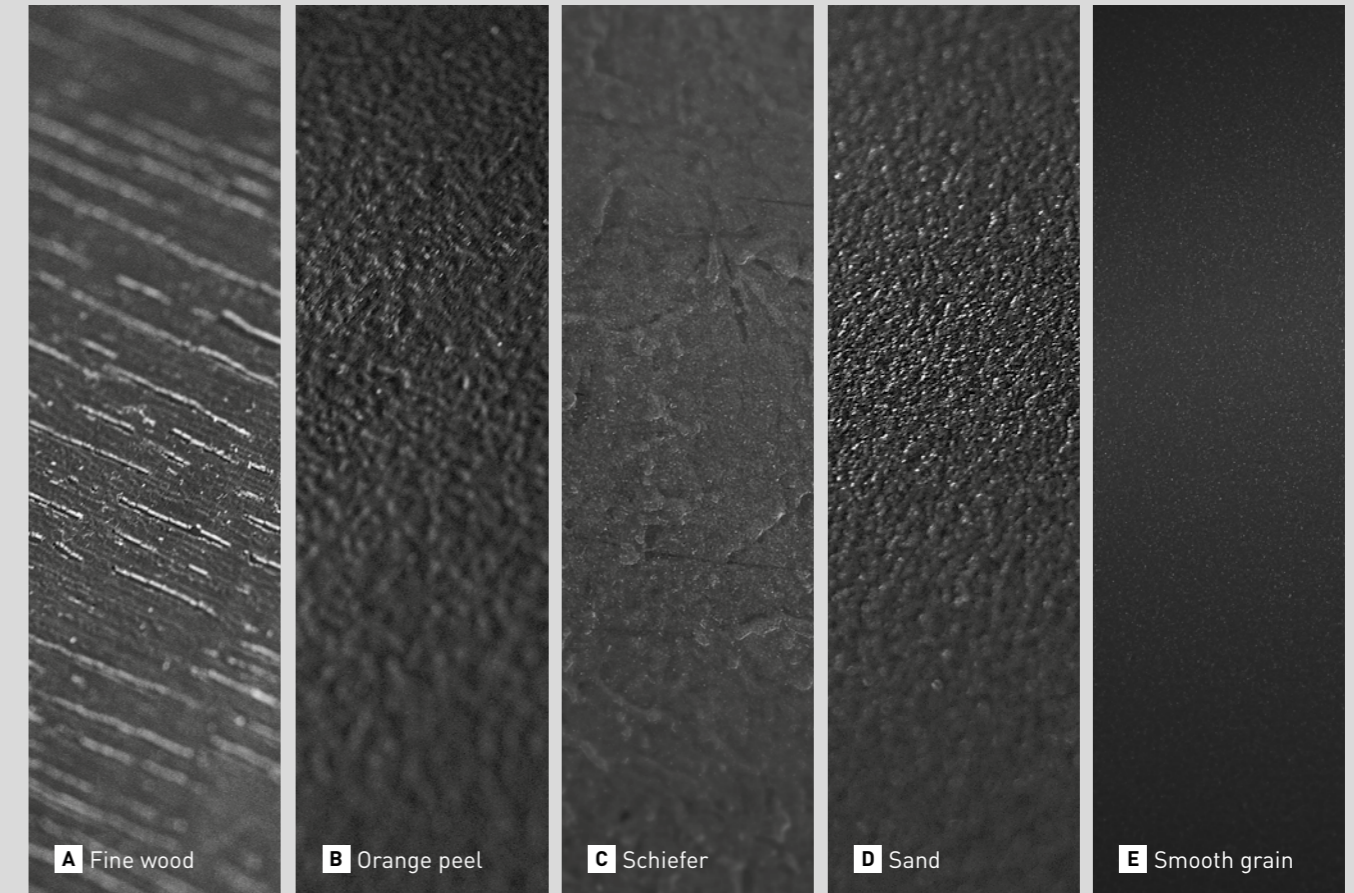
Our research and development experts are constantly looking for ways to innovate our products in an environmentally friendly and sustainable way.

The quality of our production is subject to the strictest criteria:

- Use of our own laboratories equipped with modern analytical instruments
- Guarantee of a high standard of supplier selection and control of input raw materials
- Multi-stage control of the production process
- Keeping all production documentation in electronic form
- Tracking the flow of materials using barcodes



Surface structure - texture



SILVER block - Antibacterial activity of PUR varnish

In addition to their aesthetic and utilitarian function, floor coverings must meet the highest hygiene standards, which is why the top layer of our floor coverings is created using UV-curable PUR varnish. The cured PUR varnish creates a continuous coating that enhances the attractive appearance of the decking, increases the resistance of the surface to chemicals and makes maintenance easier.

The PUR varnish is treated with the SILVER block method, which creates a shield against the undesirable action of microorganisms. The protection is achieved by incorporating additives based on silver compounds into the varnish formulation: the silver ions become a permanent part of the coating once the varnish has cured. The effectiveness of the SILVER block protection has been tested and verified by an independent testing laboratory according to the international standard ISO 22196:2011.

The main advantages of the SILVER block treatment of the PUR varnish:

- Protection against bacteria by following the instructions for regular therapy*
- Effectiveness proven by a test conducted by an independent testing laboratory
- High resistance to chemicals and stains

*) The detailed procedure for the cleaning, treatment and maintenance of floor coverings with a PUR coating is set out in the relevant laying code available on the website www.fatrafloor.com.



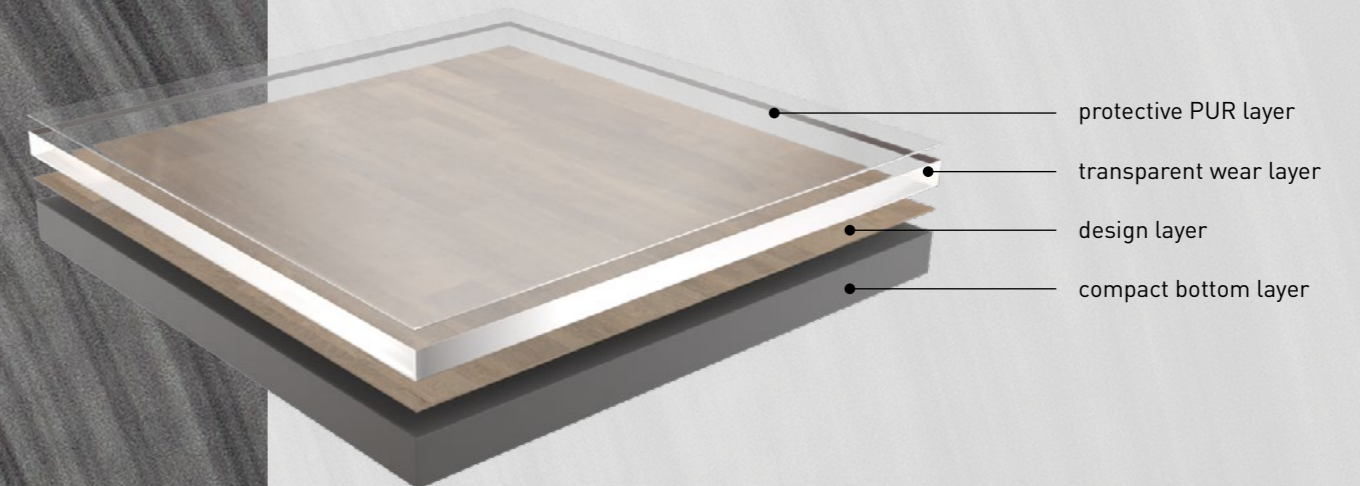
HETEROGENEOUS FLOOR COVERINGS

Heterogeneous PVC floorings consist of several layers differing in composition or design. The thickness of the wear layer determines the degree of load and the area of application. Thus, they represent a solution for commercial and residential construction, but also light industry.

Heterogeneous floor coverings are available in rolls of 1,500mm and 2,000mm widths, offering a rich design possibilities thanks to their wide range of patterns.

Advantages of heterogeneous PVC:

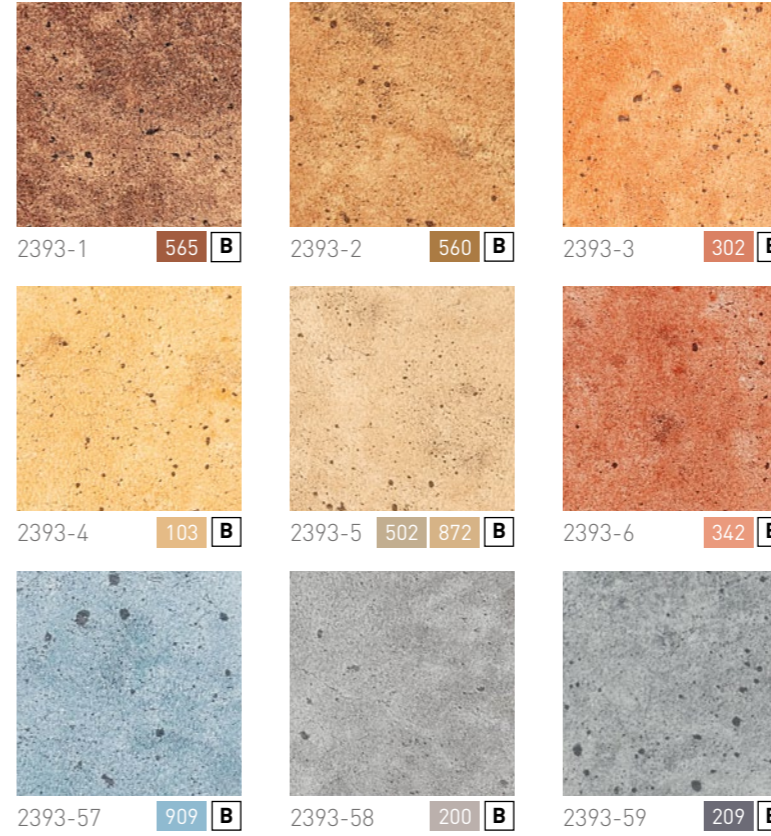
- Attractive appearance
- High wear resistance
- Resistance to commonly used chemicals
- Possibility of laying over underfloor heating
- Resistant to the impact of wheeled office chairs
- Mutual combinability of decors
- Bacteria-resistant surface
- Wide range of accessories (step edges, skirting boards, welding cords)



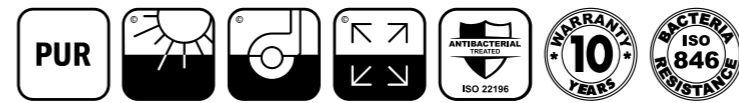
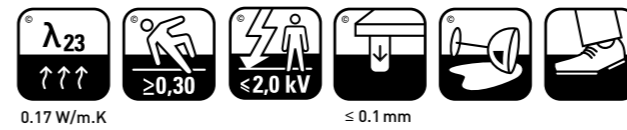
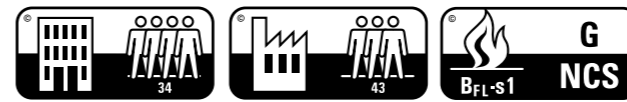
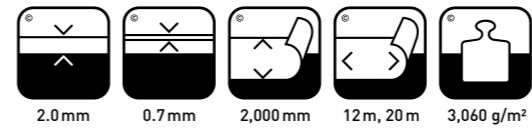
NOVOFLOR EXTRA

fatra LINO®

NOVOFLOR EXTRA
TAURI



2393-1 Decor Number **565** Cord Color **B** Texture



NOVOFLOR EXTRA TAURI 2393-6

NOVOFLOR EXTRA TAURI 2393-2

NOVOFLOR EXTRA

fatra LINO®

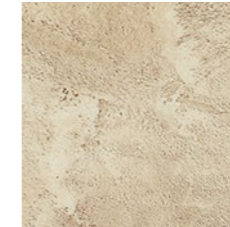
NOVOFLOR EXTRA
GRIT



2470-1 501 C



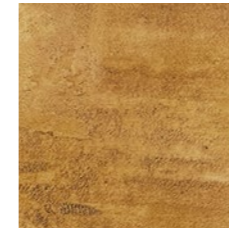
2470-2 281 C



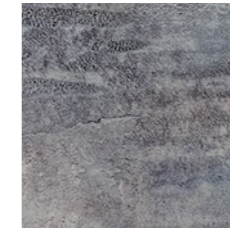
2470-3 872 C



2470-4 565 C



2470-5 560 C



2470-56 281 C

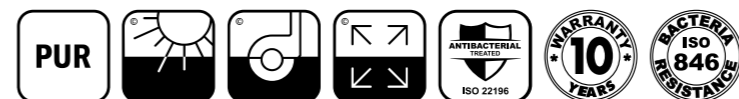
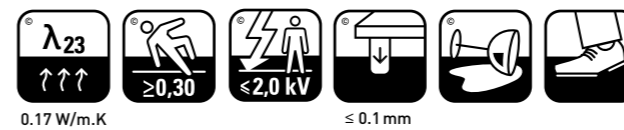
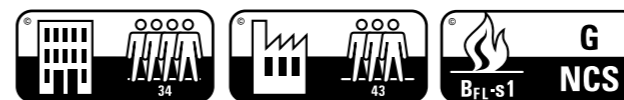
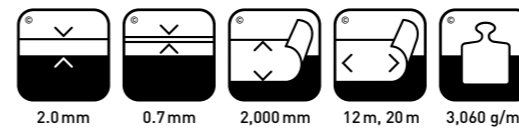


2470-57 283 C



2470-58 283 C

2470-1 Decor Number 501 Cord Color C Texture



NOVOFLOR EXTRA GRIT 2470-2

NOVOFLOR EXTRA GRIT 2470-3

NOVOFLOR EXTRA



NOVOFLOR EXTRA COMET 2539-52

fatra LINO®

NOVOFLOR EXTRA
COMET



2539-51 701 C



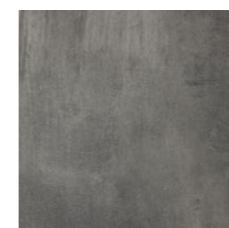
2539-52 264 200 C



2539-53 283 C

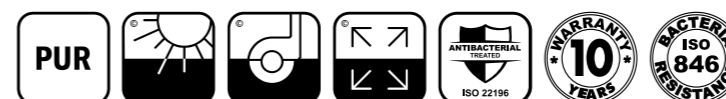
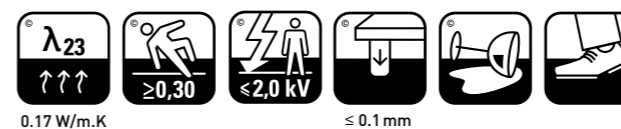
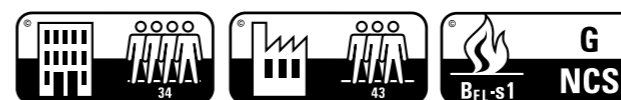
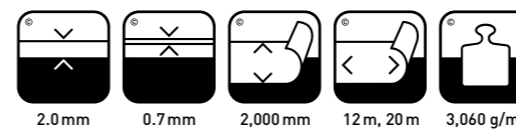


2539-54 706 C



2539-55 702 C

2539-51 Decor Number 701 Cord Color C Texture

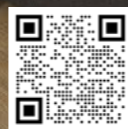


NOVOFLOR EXTRA COMET 2539-53

NOVOFLOR EXTRA



NOVOFLOR EXTRA MARS 2430-1



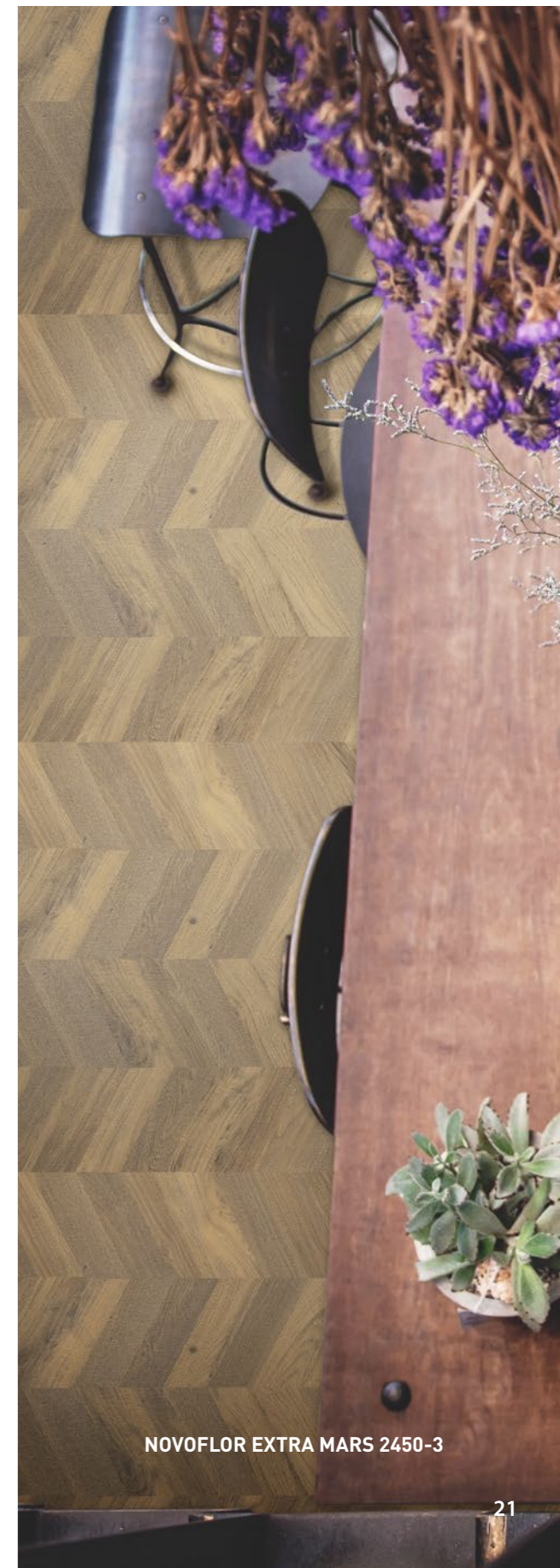
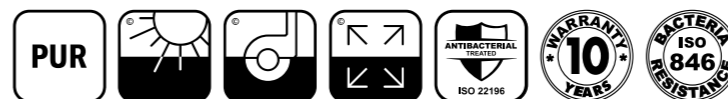
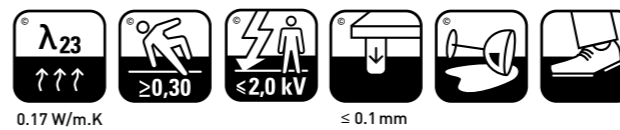
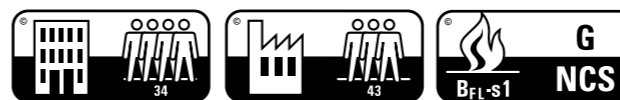
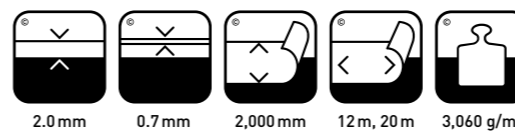
TRY OUR NEW VIRTUAL DESIGNER!

fatra LINO®

NOVOFLOR EXTRA
MARS



2420-1 Decor Number 502 Cord Color A Texture



NOVOFLOR EXTRA MARS 2450-3

NOVOFLOR EXTRA

fatra LINO®

NOVOFLOR EXTRA
SPARKLE



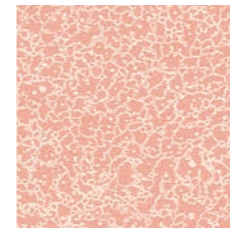
2440-1 406 B



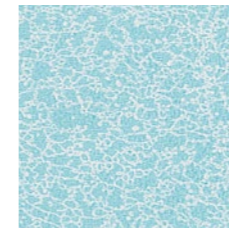
2440-2 456 454 B



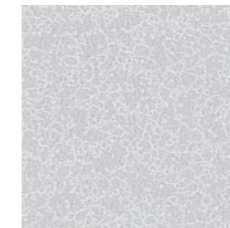
2440-3 567 B



2440-4 309 B



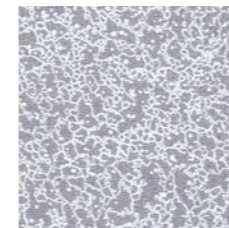
2440-55 922 B



2440-56 203 B

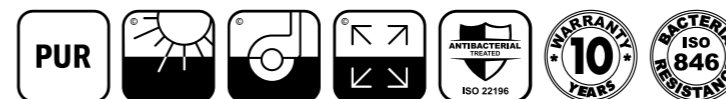
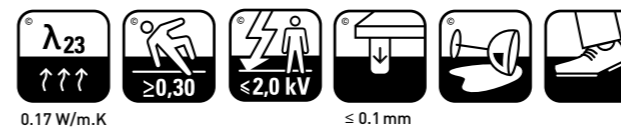
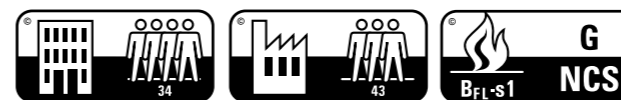
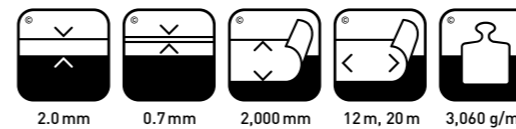


2440-57 277 B

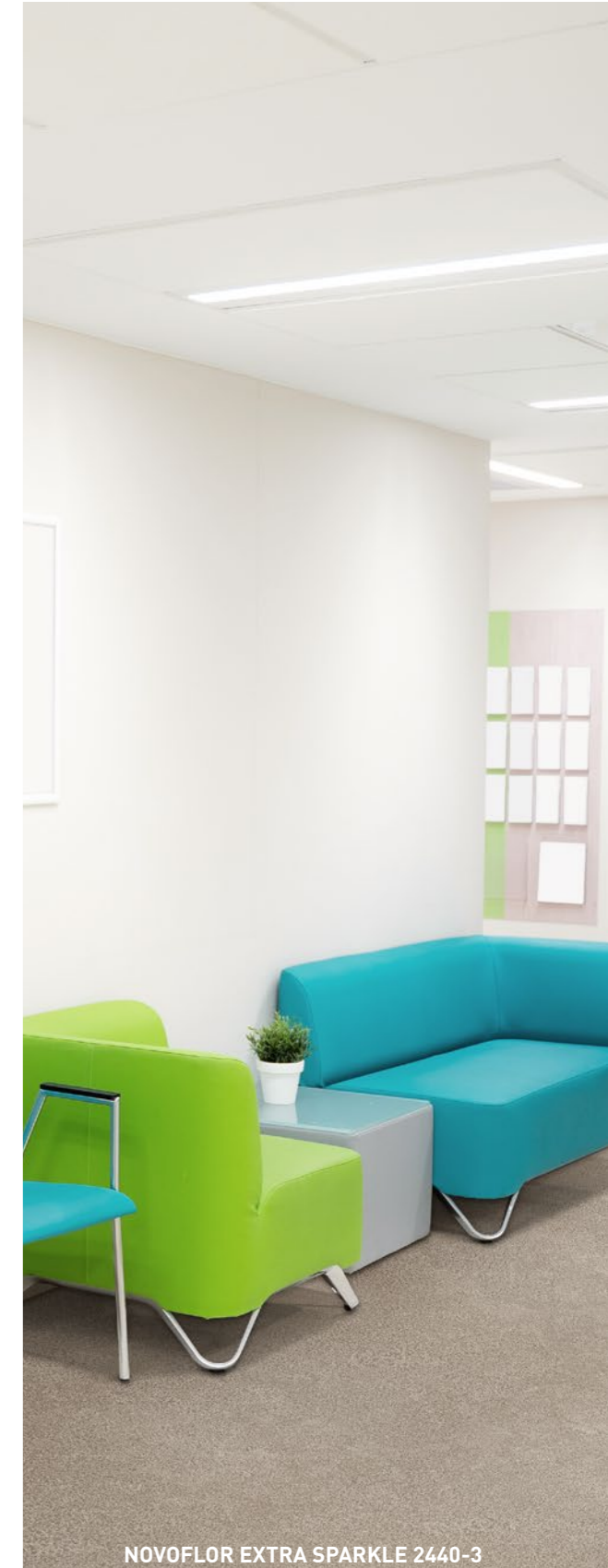


2440-58 247 B

2440-1 Decor Number 406 Cord Color B Texture



NOVOFLOR EXTRA SPARKLE 2440-55

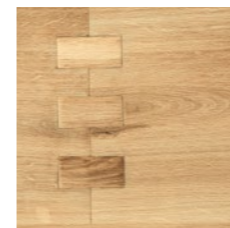


NOVOFLOR EXTRA SPARKLE 2440-3

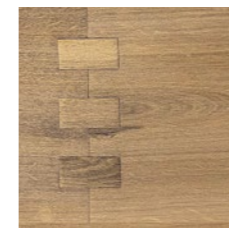
NOVOFLOR STANDARD

fatra LINO®

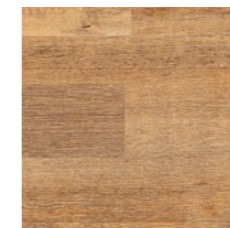
NOVOFLOR STANDARD
WEGA



2460-1 516 A



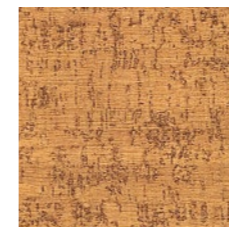
2460-4 509 A



2417-1 852 A



2417-4 564 A



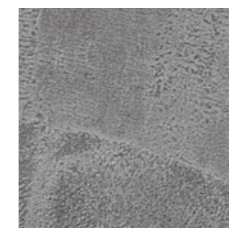
2595-2 560 A



2595-51 293 A

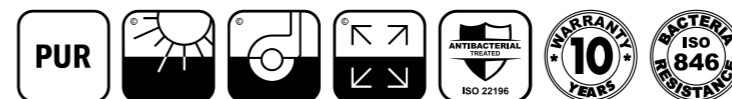
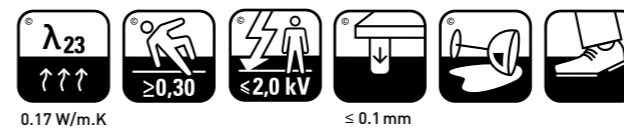
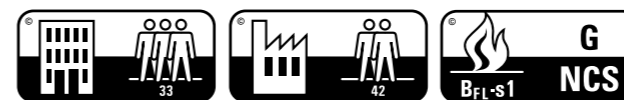
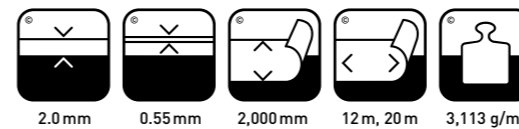


2544-1 289 C



2544-53 209 C

2460-1 Decor Number 516 Cord Color A Texture



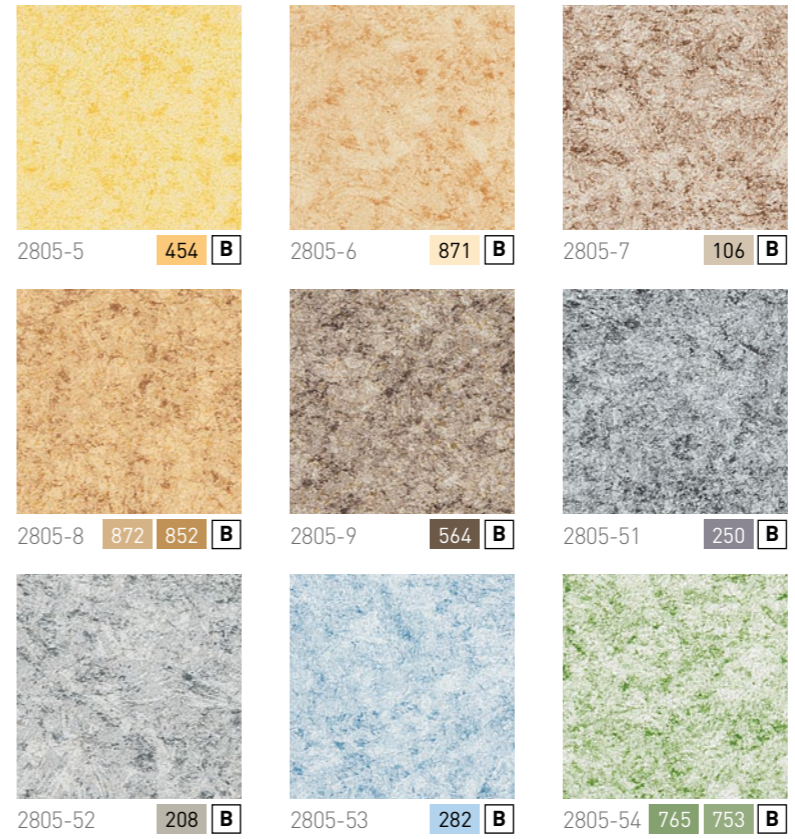
NOVOFLOR STANDARD WEGA 2544-1

NOVOFLOR STANDARD WEGA 2417-4

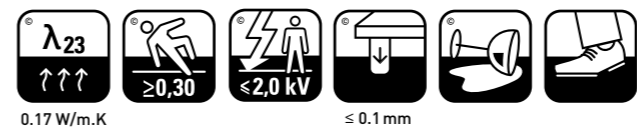
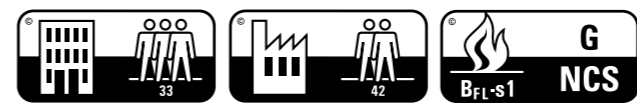
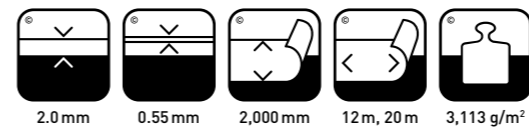
NOVOFLOR STANDARD

fatra LINO®

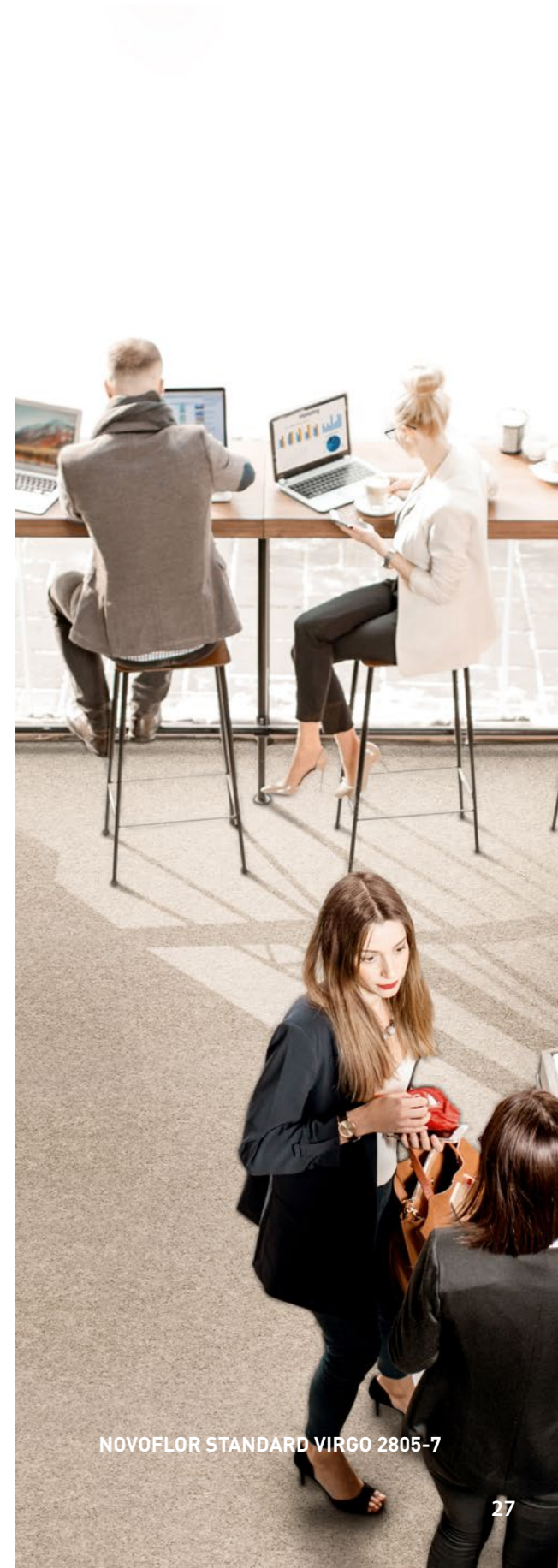
NOVOFLOR STANDARD
VIRGO



2805-5 Decor Number **454** Cord Color **B** Texture



NOVOFLOR STANDARD VIRGO 2805-9



NOVOFLOR STANDARD VIRGO 2805-7

DOMO

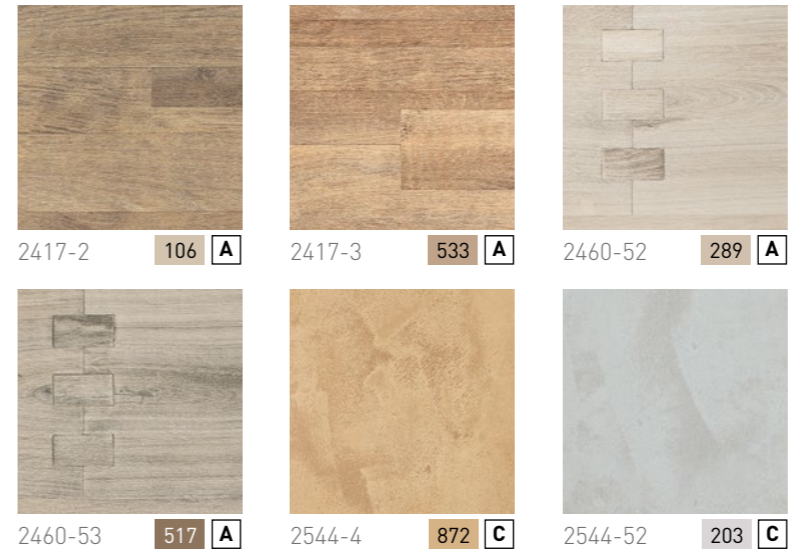


DOMO 2460-52

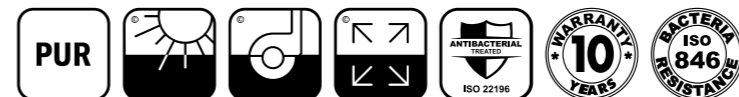
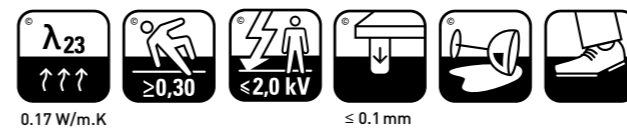
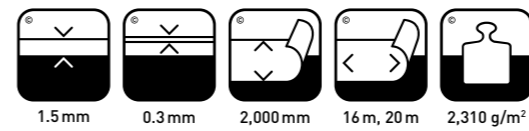


TRY OUR NEW VIRTUAL DESIGNER!

fatra LINO® | DOMO



2417-2 Decor Number 106 Cord Color A Texture

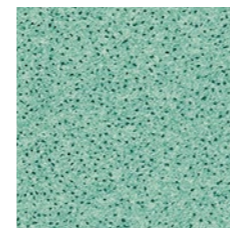


DOMO 2544-52

NOVOFLOR EXTRA

fatra LINO®

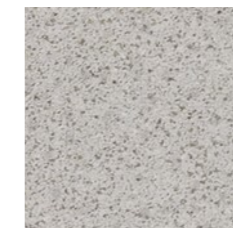
NOVOFLOR EXTRA
COMFORT



2015-4 781 B



2015-51 501 B



2015-52 245 B



2015-55 933 B

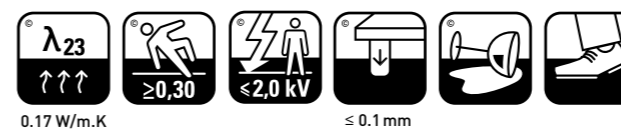
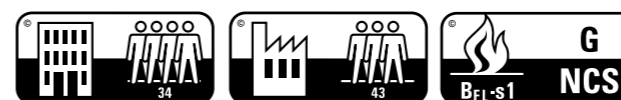
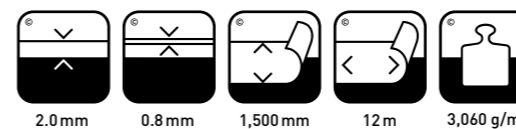


2015-8 342 B



2015-9 872 B

2015-4 Decor Number 781 Cord Color B Texture



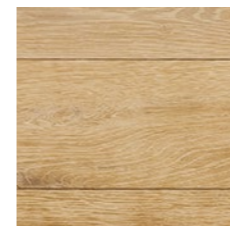
NOVOFLOR EXTRA



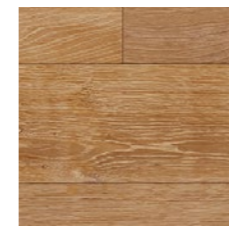
NOVOFLOR EXTRA WOOD 2017-1

fatra LINO®

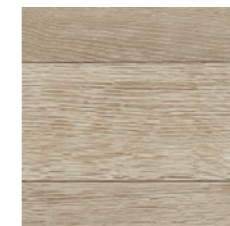
NOVOFLOR EXTRA
WOOD



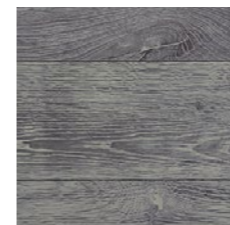
2017-1 852 A



2017-3 852 A



2017-5 570 A



2017-56 281 A

2017-1 Decor Number 852 Cord Color A Texture

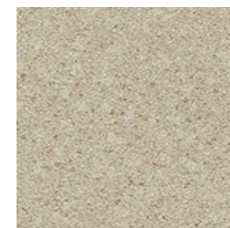


NOVOFLOR EXTRA WOOD 2017-3

NOVOFLOR EXTRA

fatra LINO®

NOVOFLOR EXTRA
VARIO



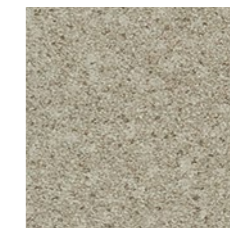
2013-1 249 B



2013-2 281 B



2013-3 570 B



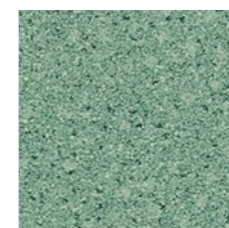
2013-6 249 B



2013-7 452 B



2013-8 346 B



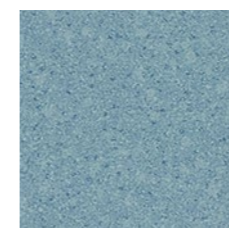
2013-10 732 B



2013-11 872 B

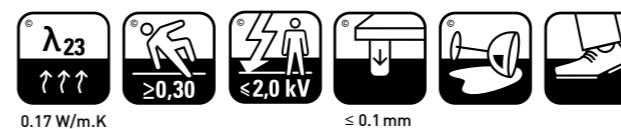
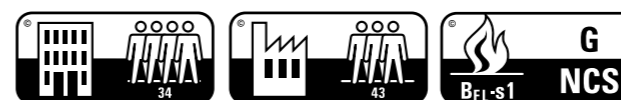
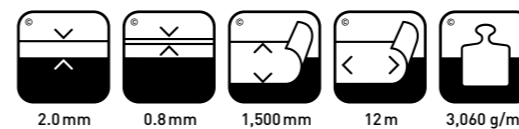


2013-12 852 B



2013-13 933 B

2013-1 Decor Number 249 Cord Color B Texture



NOVOFLOR EXTRA VARIO 2013-8, 2013-1




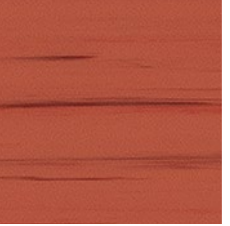
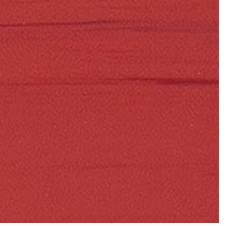

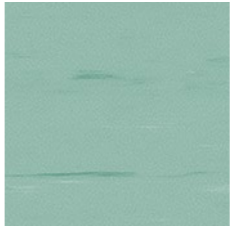







NOVOFLOR EXTRA VARIO 2013-10







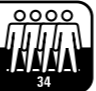










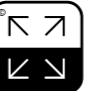


DUAL



DUAL 107

fatra LINO® | DUAL

 107 277 B	 215 277 B	 247 248 B	 309 343 B	 320 348 B
 414 452 B	 737 781 B	 742 732 B	 830 871 B	 853 453 B
 855 541 B	 861 533 B	 903 949 B		
 952 981 B	107 Decor Number 277 Cord Color B Texture			

 2.0 mm	 0.8 mm	 1,500 mm	 12 m	 2,890 g/m²
 34	 43	 B _{F1} -s1	 G NCS	
 λ ₂₃ ↑↑↑ 0.17 W/m.K	 ≥0,30	 ≤ 0.1 mm		
 PUR				 WARRANTY 10 YEARS
 BACTERIA RESISTANCE ISO 846				

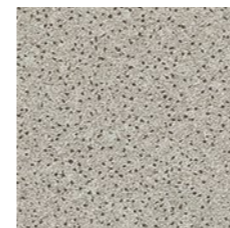


DUAL 903

NOVOFLOR EXTRA

fatra LINO®

NOVOFLOR EXTRA
AMOS



2015-853 266 B



2015-86 454 B



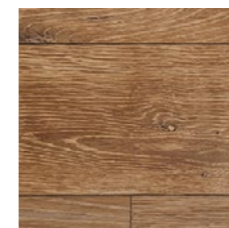
2015-87 351 B



2015-810 533 B

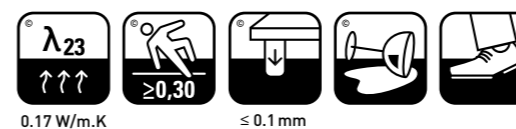
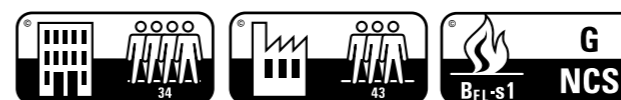
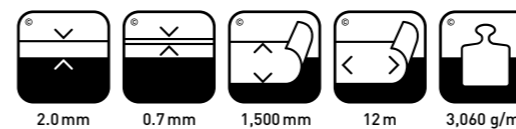


2017-82 852 A



2017-84 560 A

2015-853 Decor Number 266 Cord Color B Texture



SPECIAL HOMOGENEOUS FLOOR COVERINGS

Antistatic and electrostatically conductive PVC floorings are a group of special coverings that meet the demanding requirements for electrical properties of floorings. They represent a highly efficient solution in interiors where the emphasis is on ensuring safety needs.

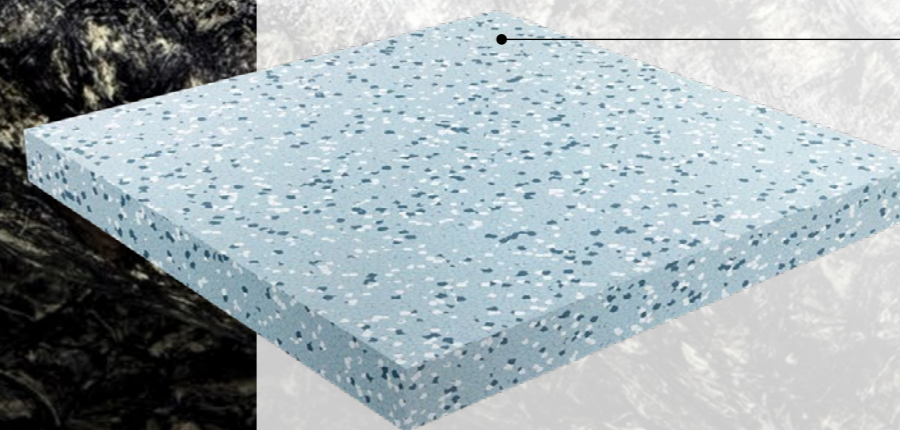
ELEKTROSTATIK electrostatic floorings are sought after for their excellent electrical conductivity (internal electrical resistance $\leq 1 \cdot 10^6 \Omega$). They can be used in laboratories, operating theatres or X-ray departments.

DYNAMIK (internal electrical resistance $\leq 1 \cdot 10^8 \Omega$) and GARIS SD (internal electrical resistance $\leq 1 \cdot 10^9 \Omega$) antistatic floorings are distinguished by their electrical conductivity. They are suitable for areas where electrostatic discharges must be prevented. This covering prevents the formation of electrostatic voltages on persons moving on it or on components placed on it. It is suitable for installation in computer rooms, telecommunications or electronics manufacturing.

We offer the ELEKTROSTATIK and DYNAMIK special homogeneous floorings in the 608 x 608 mm tile format, and GARIS SD in the form of 1,500 mm wide rolls.

Advantages of special homogeneous PVC:

- High wear resistance
- Resistance to commonly used chemicals
- Possibility of laying over underfloor heating
- Resistant to the impact of wheeled office chairs
- Mutual combinability of decors
- Easy maintenance
- Bacteria-resistant surface
- Wide range of accessories (step edges, skirting boards, welding cords)



Special floor coverings maintain consistent composition and design throughout their entire thickness



GARIS, GARIS SD

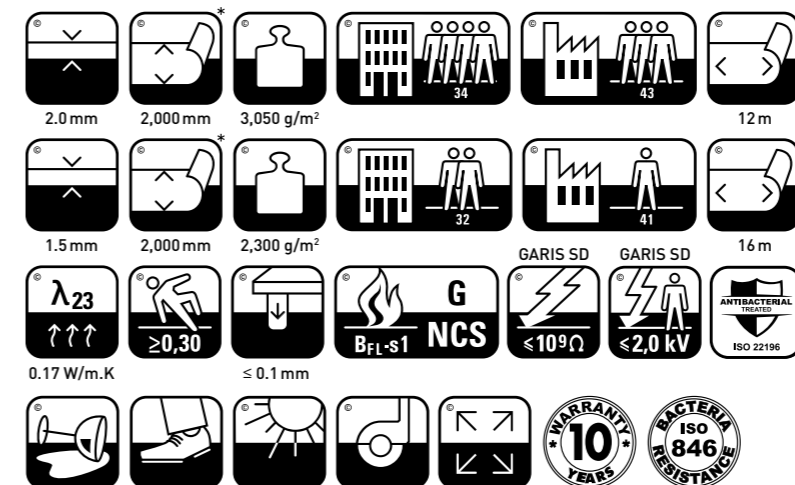
fatra LINO®

GARIS, GARIS SD

2 000 mm



203-2 Decor Number 280 Cord Color E Texture



GARIS SD 203-2



TRY OUR NEW VIRTUAL DESIGNER!

GARIS SD 952-2



GARIS, GARIS SD

GARIS SD 277

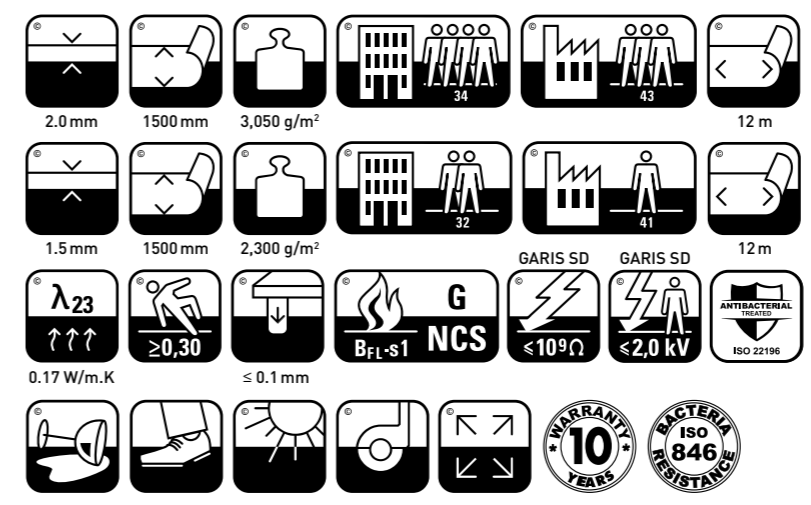
fatra LINO®

GARIS, GARIS SD

1 500 mm



203 Decor Number 280 Cord Color D Texture

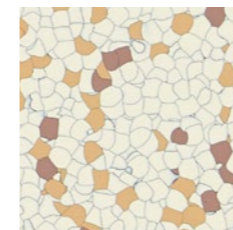


GARIS SD 203

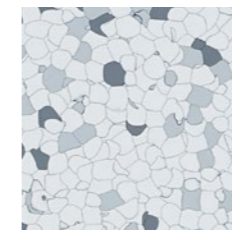
ELEKTROSTATIK A - DYNAMIK A

fatra LINO®

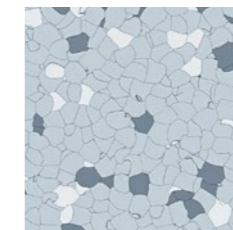
ELEKTROSTATIK A - DYNAMIK A



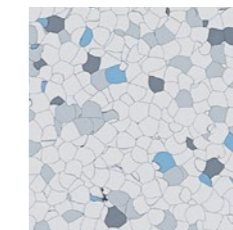
1301 541



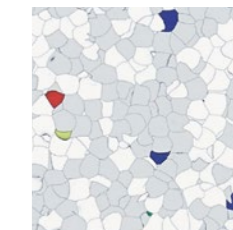
2301 230 277



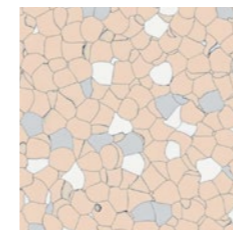
2317 277



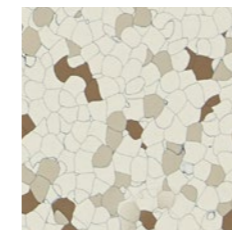
2403 230



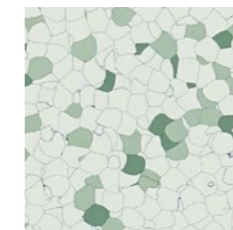
2601 230



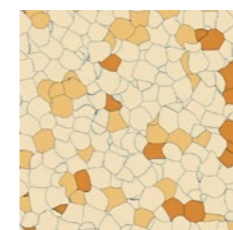
3304 311



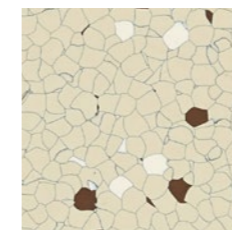
5301 501



7301 714



8301 801

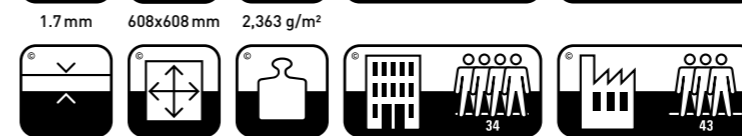


8306 264



8315 541

1301 Decor Number 541 Cord Color



DYNAMIK A 2601, 2301

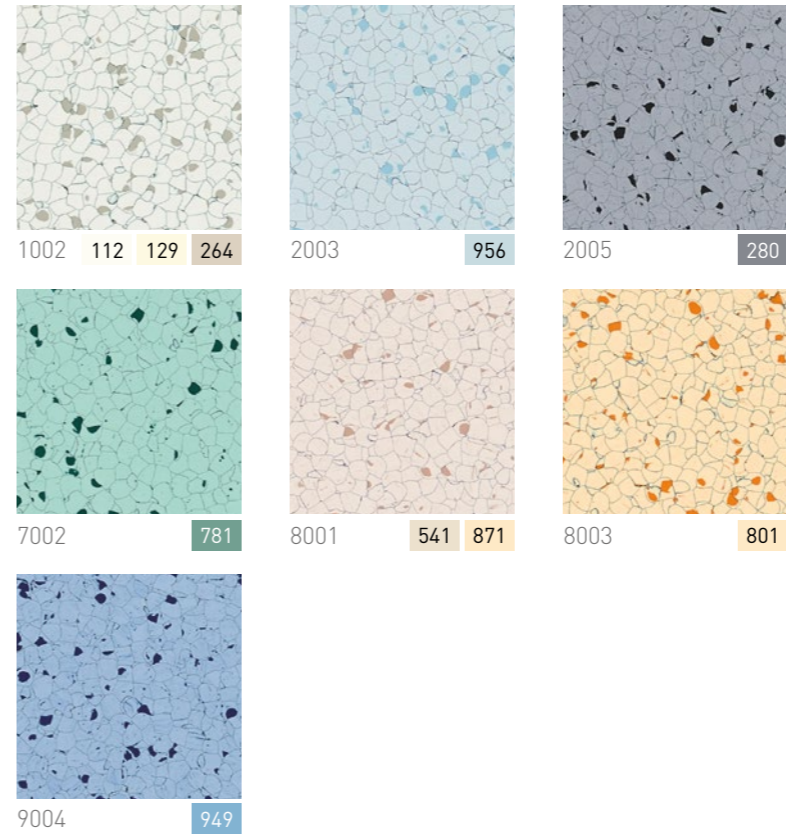
DYNAMIK A 2403



ELEKTROSTATIK X - DYNAMIK X

fatra LINO®

ELEKTROSTATIK X - DYNAMIK X



1002 Decor Number 129 Cord Color

1.7 mm	608x608 mm	2,584 g/m ²	32	41		
2.0 mm	608x608 mm	3,040 g/m ²	34	43		
0.17 W/m.K	≥ 0,30	≤ 0.1 mm	G BFL-s1 NCS	≤ 10 ⁶ Ω	≤ 10 ⁸ Ω	≤ 2.0 kV

ELEKTROSTATIK X 7002, 9004

ELEKTROSTATIK X 2005

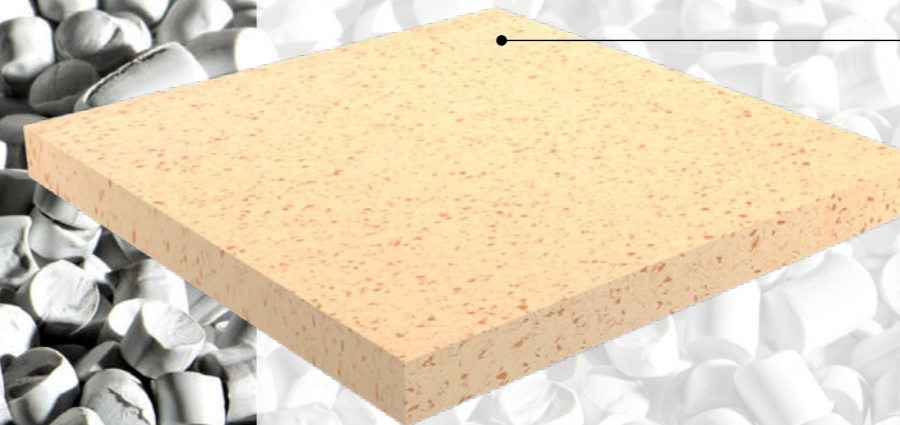
HOMOGENEOUS FLOOR COVERINGS

Homogeneous PVC floorings consist of only one layer that is identical throughout the entire thickness of the covering. This provides a durable solution for applications in high-traffic areas. Thanks to the durability of the surface and its easy cleaning, they are particularly suitable for schools and healthcare facilities, as well as other public areas.

Praktik pressed homogeneous flooring is supplied in the form of 608 x 608 mm tiles, which is glued to the subfloor and then welded with welding cords.

Advantages of homogeneous PVC:

- High wear resistance
- Resistance to commonly used chemicals
- Possibility of laying over underfloor heating
- Resistant to the impact of wheeled office chairs
- Mutual combinability of decors
- Easy maintenance
- Bacteria-resistant surface
- Wide range of accessories (step edges, skirting boards, welding cords)



Homogeneous floor coverings maintain consistent composition and design throughout their entire thickness

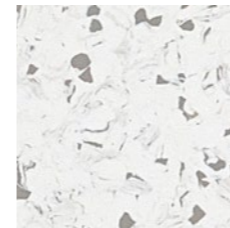
PRAKTIK



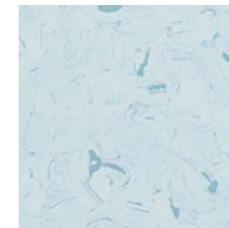
PRAKTIK 9004

fatra LINO®

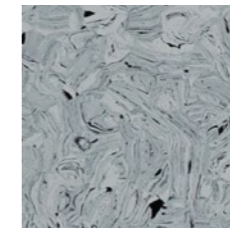
PRAKTIK



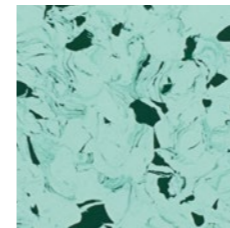
1002 112 129 264



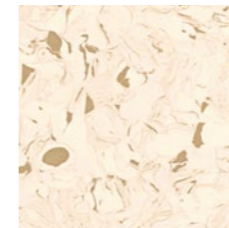
2003 956



2005 280



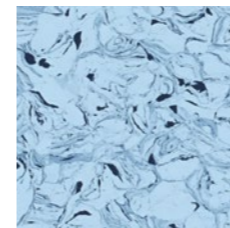
7002 781



8001 541 871

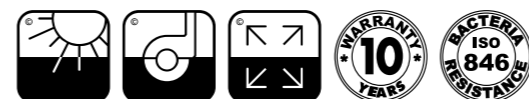
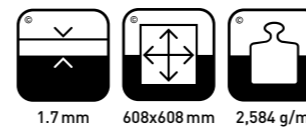


8003 801



9004 949

1002 Decor Number 129 Cord Color



PRAKTIK 1002

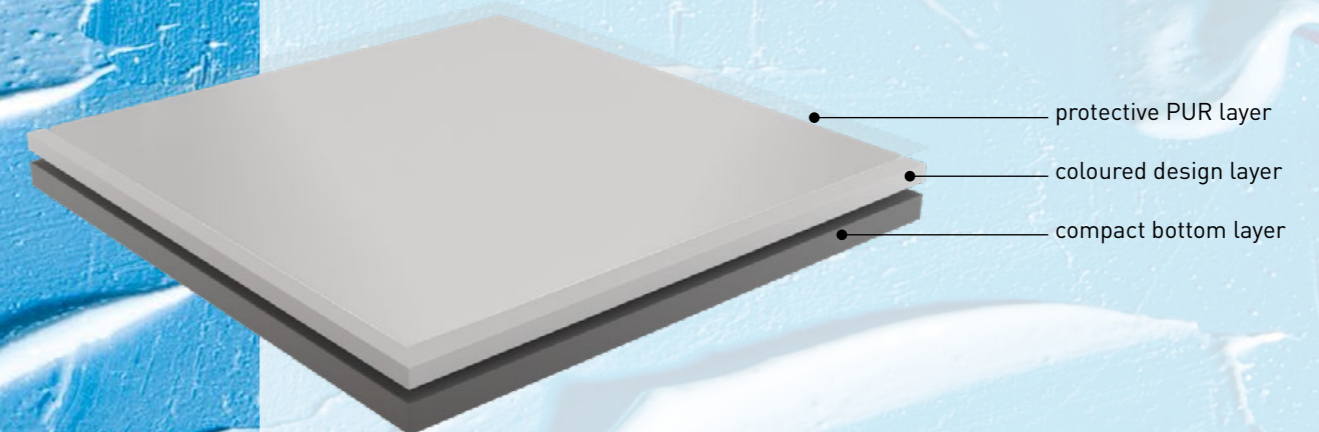
WALL COVERING

Our product range is complemented by the MODUL heterogeneous wall covering, which is supplied in a roll of 1,500 mm width. It meets hygiene standards to ensure a clean indoor environment. The surface of the protective covering is easy to clean thanks to the PUR layer, excels in durability and reduces maintenance costs.

It can be used in buildings with intensive traffic, where high requirements for hygiene and protection against mechanical damage to the walls are imposed.

Advantages of PVC wall covering:

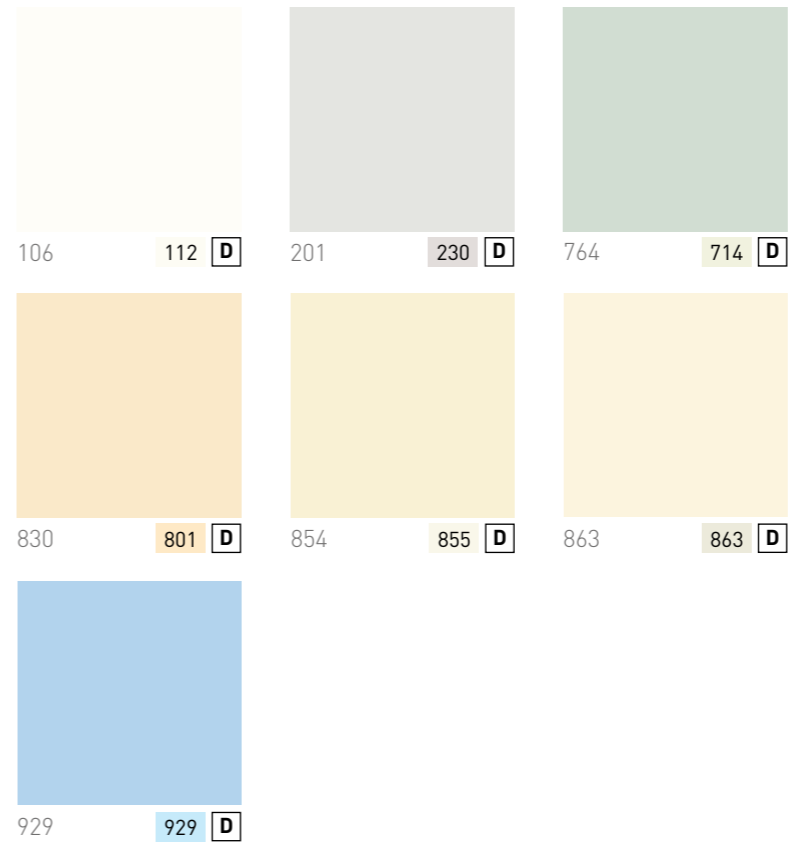
- Colour fastness in artificial light
- Product reaction to fire (B-s2, d0)
- Dimensional stability
- Stain resistance
- Sound insulation



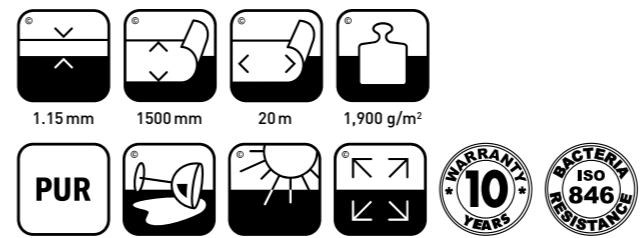
MODUL - WALL COVERING



fatra LINO® | **MODUL**



106 Decor Number 112 Cord Color **D** Pattern

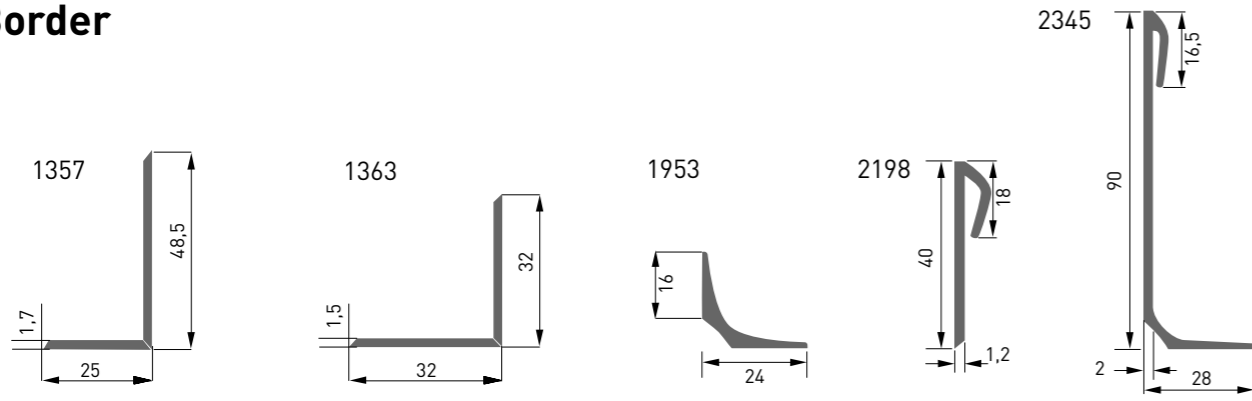


MODUL 854

MODUL 863

Accessories

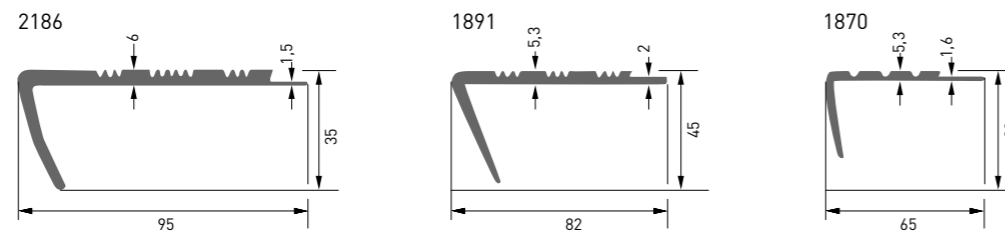
Border



No	Weigh kg/rm	BOX		PALLET			
		rm	kg	box	rm	kg netto	kg brutto
1357	0.16	80	12.4	24	1,920	298	342
1363	0.12	120	14.4	18	2,160	259	305
*1953	0.17	200	33.0	10	2,000	330	348
*2198	0.13	150	18.8	16	2,400	300	330
*2345	0.36	75	27.0	10	750	270	288

* length on the border is 250 cm

Staircase nosing



No	Weigh kg/rm	Length cm	BOX			PALLET			
			pcs	rm	kg	box	rm	kg netto	kg brutto
2186	0.83	250	16	40	33.2	10	400	332	351
1891	0.67	250	20	50	33.6	10	500	336	355
		200	20	40	26.8	10	400	268	282
		150	20	30	20.1	10	300	201	213
1870	0.40	250	40	100	40.0	10	1,000	400	420

Shade cards

Color of floor accessories

Colour number	Colour	Welding string	1891 Staircase nosing	2186 Staircase nosing	1870 Staircase nosing	1953 Border - Cavetto	1953 Border - Cavetto with scaling moulding	1363 Border - Baseboard	1357 Border - Baseboard	2198 Border - Scaling moulding
096		•								
103		•								
106		•								
112		•				•	•	•	•	•
129		•						•		
200		•								
203		•								
208		•	•	•	•			•	•	
209		•								
230		•						•	•	
245		•						•		
247		•								
248		•						•		
249		•						•		
250		•								
264		•						•		
266		•						•		
277		•						•		
280		•	•	•	•			•	•	
281		•						•		
282		•								
283		•								
289		•								
293		•								
302		•								
309		•								
311		•						•		
342		•						•		
343		•						•		
346		•						•		
348		•						•		
349		•						•		
351		•						•		
377		•								
406		•								
408		•						•		
421		•	•							
428		•						•		
452		•						•		
453		•						•		
454		•						•		
456		•								
495		•								
501		•						•		








Colour number	Colour	Welding string	1891 Staircase nosing	2186 Staircase nosing	1870 Staircase nosing	1953 Border - Cavetto	1953 Border - Cavetto with scaling moulding	1363 Border - Baseboard	1357 Border - Baseboard	2198 Border - Scaling moulding
502		•								
509		•								
516		•								
517		•								
533		•	•	•	•			•		
541		•						•		
545		•	•	•	•			•		
560		•	•	•	•			•	•	
564		•								
565		•						•		
567		•								
570		•						•		
600		•	•	•	•	•				
701		•								
702		•								
706		•								
709		•						•		
714		•						•		
716		•						•		
732		•						•		
753		•								
765		•								
777		•								
781		•						•		
801		•						•		
816		•	•	•	•			•	•	
832		•						•		
852		•						•		
855		•								
861		•								
863		•								
871		•						•		
872		•						•		
881		•								
903		•								
909		•								
922		•								
929		•								
933		•						•		
949		•						•		
956		•						•		
957		•						•		
966		•						•		
981		•						•		

Area of application

		DOMO	NOVOFLOR STANDARD	NOVOFLOR EXTRA	DUAL	DYNAMIK	PRAKTIK	ELEKTROSTATIK	GARIS SD	NFE AMOS
HEALTH CARE FACILITIES	receptions		•	•	•	•	•	•	•	
	waiting rooms		•	•	•	•	•	•	•	
	rooms		•	•	•	•	•	•	•	
	treatment rooms		•	•	•	•	•	•	•	
	consulting rooms							•		
	ICU							•		
	delivery rooms							•		
	laboratories, radiotherapy facilities					•		•	•	
	administration facilities		•	•	•	•	•	•	•	
OFFICES	receptions		•	•	•	•	•	•	•	
	meeting rooms		•	•	•	•	•	•	•	
	offices		•	•	•	•	•	•	•	
	sanitary facilities		•	•	•	•	•	•	•	
SCHOOLS*	receptions, lobbies		•	•	•	•	•	•	•	•
	classrooms		•	•	•	•	•	•	•	•
	dormitories, rooms		•	•	•	•	•	•	•	•
	cloakrooms		•	•	•	•	•	•	•	•
	study rooms, libraries		•	•	•	•	•	•	•	•
	laboratories					•	•	•	•	•
	administration facilities		•	•	•	•	•	•	•	•
	corridors, staircases		•	•	•	•	•	•	•	•
sanitary facilities		•	•	•	•	•	•	•	•	
LIGHT INDUSTRY	receptions		•	•	•	•	•	•	•	
	showrooms		•	•	•	•	•	•	•	
	canteens		•	•	•	•	•	•	•	
	cloakrooms		•	•	•	•	•	•	•	
	sanitary facilities		•	•	•	•	•	•	•	
	production halls			•	•	•	•	•	•	
	warehouses			•	•	•	•	•	•	
HOTELS	receptions			•	•	•	•	•	•	
	restaurants, bars			•	•	•	•	•	•	
	conference rooms		•	•	•	•	•	•	•	
	corridors, staircases			•	•	•	•	•	•	
	rooms		•	•	•	•	•	•	•	
SHOPS	shops			•	•	•	•	•	•	
	department stores			•	•	•	•	•	•	
	supermarkets			•	•	•	•	•	•	
RESIDENTIAL HOUSES	lobbies		•	•	•	•	•	•	•	
	rooms, kitchens		•	•	•	•	•	•	•	
	corridors, staircases		•	•	•	•	•	•	•	
KITCHENS	sanitary facilities		•	•	•	•	•	•	•	
	factory canteens			•	•	•	•	•	•	
TECHNICAL CENTRES	cafeterias, canteens			•	•	•	•	•	•	
	computer rooms					•	•	•	•	
	technical rooms			•	•	•	•	•	•	
	control rooms			•	•	•	•	•	•	

* We recommend that mobile furniture be fitted with a felt pad

Classification

	 DOMESTIC	 COMMERCIAL	 LIGHT INDUSTRY
 MODERATE	21	31	41 Elektrostatik, Dynamik, Praktik (1.7)
 MEDIUM	22	32 Elektrostatik, Dynamik, Praktik (1.7)	42 Novoflor Standard
 HEAVY	23 Domo, Novoflor Extra, Novoflor Standard, Dual, Garis SD, Elektrostatik, Dynamik, Praktik	33 Novoflor Standard	43 Novoflor Extra, Novoflor Extra Amos, Dual, Garis SD, Elektrostatik, Dynamik (2.0)
 VERY HEAVY		34 Novoflor Extra, Dual, Garis SD, Elektrostatik, Dynamik (2.0)	

On our web sites www.fatrafloor.com you can find as well important information necessary for your maximum satisfaction with our floor coverings:

- Laying instructions
- Certificates
- References

Packing

Box

			ELEKTROSTATIK, DYNAMIK		PRAKTIK
			1.7	2.0	1.7
PACKING	BOX	pcs	35	30	35
		m ²	12.91	11.07	12.91
	PALLET	pcs of box	18	18	18
		m ²	232.38	199.26	232.38
APPROX. WEIGHT BRUTTO	BOX	kg	32	32	32
	PALLET	kg	576	576	576

Rolls

			DOMO		NOVOFLOR STANDARD		NOVOFLOR EXTRA		DUAL	GARIS SD	MODUL	
THICKNESS	mm		1.5	2.0	2.0	2.0	2.0	2.0	2.0	2.0	1.15	
WIDTH	m		2.0	2.0	2.0	1.5	1.5	1.5	1.5	1.5	1.5	
PACKING	LENGHT	m	16	20	12	20	12	20	12	12	20	
	AREA	m ²	32	40	24	40	24	40	18	18	30	
APPROX. WEIGHT BRUTTO	ROLLS	kg	77	95	78	127	76	125	56	53	51	57

Instructions for the installation, care and maintenance of PVC floor coverings and wall coverings

Storage

The rolls must be stored at a temperature of +5 °C to +35 °C in a dry and dust-free indoor area, min. 1 m from heat sources. Flooring must be protected from the effects of direct sunlight and artificial lighting with a high UV component.

Installation

- The installation of the covering is carried out using the technology according to the relevant installation code of the manufacturer.
- We recommend that the covering is installed by a professional flooring company.
- Visually check the quality of appearance and execution before laying the covering.
- In case there are visible appearance defects, do not install the covering and contact seller.
- The covering is not suitable for free laying; it is laid by full surface bonding with dispersion or solvent-based adhesives recommended by the manufacturer.
- Immediately after laying, the covering must be rolled using a 50 kg segmented roller.
- Before installation it is necessary to:
 - roll out the covering in rolls and stabilise the surface and dimension at a temperature above +18 °C for 48 hours,
 - temper the covering in parts at a temperature above +18 °C for 48 hours.
- The underlay for laying must be flat, smooth, free of cracks and dust, sufficiently firm, clean and dry. Unevenness, grease stains and other defects must be removed.
- Coverings must not be glued in rooms that are not sufficiently insulated against underfloor moisture and in rooms with underfloor heating systems if the surface temperature permanently exceeds +28 °C.
- The room and underlay temperature must not fall below +18 °C during installation.
- For floor coverings with regular decor, there is no continuity of the pattern between the individual planks or parts guaranteed.
- During installation:
 - for coverings in rolls, there is serial number each roll that must follow one after the other in installation process,
 - coverings in parts must follow the laying direction indicated by the arrow on the back side of the part to avoid differences in the shade of the installed floor covering,
 - it is not recommended to combine different production batches.

FLOOR AND WALL COVERING TREATMENT

- The detailed procedure for cleaning, treatment and maintenance of covering is set out in the relevant laying code.
- For normal cleaning of the covering, lukewarm water is used with the addition of a cleaning agent designed for the type of floor covering.
- The covering must be protected against staining with asphalt, products containing dyes and organic solvents and against contact with burning and smouldering objects.
- Rubber products in contact with the covering cause an irremovable colour change of the covering.
- Any surfaces of movable furniture which are in contact with the covering must be provided with suitable protective equipment [e.g. plastic glider, textile mat, PET mat for wheelchairs ("W" type wheel - soft plastic on a hard core)].
- We recommend protecting the flooring with a suitable shading technique.

Further information can be found on the manufacturer's website www.fatrafloor.com, in the relevant laying code for LINO Fatra PN 5410/97.

Technical data

TECHNICAL DATA	NORM	UNIT	ICON	DOMO	NOVOFLOR STANDARD	NOVOFLOR EXTRA	NOVOFLOR EXTRA AMOS	DUAL	MODUL	GARIS, GARIS SD				ELEKTROSTATIK, DYNAMIK		PRAKTIK
TOTAL THICKNESS	EN ISO 24346	mm		1,5	2,0	2,0	2,0	2,0	1,15	2,0	1,5	2,0	1,5	2,0	1,7	1,7
THICKNESS OF TREAD LAYER	EN ISO 24340	mm		0,30	0,55	0,80	0,70	0,80	0,50	homogeneous				homogeneous		homogeneous
CLASSIFICATION/LEVEL OF USE	EN ISO 10581 EN ISO 10582	class		21 - 23	21 - 23 31 - 33 41 - 42	21 - 23 31 - 34 41 - 43	21 - 23 31 - 34 41 - 43	21 - 23 31 - 34 41 - 43	-	21 - 23 31 - 34 41 - 43	21 - 23 31 - 32 41	21 - 23 31 - 34 41 - 43	21 - 23 31 - 32 41	21 - 23 31 - 34 41 - 43	21 - 23 31 - 32 41	21 - 23 31 - 32 41
WIDTH	EN ISO 24341	mm		2000	2000	1500	2000	1500	1500	2000	1500	2000	1500	-		-
ROLL LENGTH	EN ISO 24341	m		16, 20	12, 20	12	12, 20	12	12	20	12	16	12	16	-	
TILE SIZE	EN ISO 24342	mm		-	-	-	-	-	-	-	-	-	-	608 x 608		608 x 608
PACKING - BOX	-	m ²		-	-	-	-	-	-	-	-	-	-	11,07	12,91	12,91
AREA WEIGHT	EN ISO 23997	g/m ²		2310	3113	3060	3060	2890	1900	3050	2300	3050	2300	2780 (A) 3040 (X)	2363 (A) 2584 (X)	2584
DIMENSIONAL STABILITY	EN ISO 23999 *ČSN 640610	%		≤ 0,4	≤ 0,4	≤ 0,4	≤ 0,4	≤ 0,4	≤ 0,4*	≤ 0,4				≤ 0,4		≤ 0,4
CURLING AFTER EXPOSURE TO HEAT	EN ISO 23999	mm		≤ 8	≤ 8	≤ 8	≤ 8	≤ 8	NPD	≤ 8				NPD		NPD
RESIDUAL INDENTATION	EN ISO 24343-1	mm		≤ 0,1	≤ 0,1	≤ 0,1	≤ 0,1	≤ 0,1	NPD	≤ 0,1				≤ 0,1		≤ 0,1
CASTOR CHAIR RESISTANCE	ISO 4918	-							NPD							
COLOUR FASTNESS TO ARTIFICIAL LIGHT	EN ISO 105-B02, method 3	degree		min. 6	min. 6	min. 6	min. 6	min. 6	min. 6	min. 6				min. 6		min. 6
FLAMMABILITY	EN 13501-1 *EN 13823	class		B _{fl} -s1	B _{fl} -s1	B _{fl} -s1	B _{fl} -s1	B _{fl} -s1	B-s2, d0*	B _{fl} -s1				B _{fl} -s1		B _{fl} -s1
FORMALDEHYDE EMISSION	EN 717-1	class		E1	E1	E1	E1	E1	NPD	E1				E1		E1
SLIP RESISTANCE	EN 13893	class		DS	DS	DS	DS	DS	NPD	DS				DS		DS
THERMAL CONDUCTIVITY	EN ISO 10456	W/m.K		0,17	0,17	0,17	0,17	0,17	NPD	0,17				0,17		0,17
STAIN RESISTANCE AND CHEMICAL RESISTANCE	EN ISO 26987	-														
ANTI - SLIPPING	DIN 51130	class		R11	R11	R10	R11	R11	NPD	R10				R10		R10
ELECTRICAL RESISTANCE	EN 1081	Ω		NPD	NPD	NPD	NPD	NPD	NPD	GARIS SD ≤ 1.10 ⁹				ELEKTROSTATIK ≤ 1.10 ⁶ DYNAMIK ≤ 1.10 ⁸		NPD
FINISHING	-	-												NPD		NPD
WEAR RESISTANCE	EN 660-2	-		T	T	T	T	T	NPD	T				T		T
RESISTANCE TO BACTERIA	EN ISO 846, method C	-														
ANTIBACTERIAL PROTECTION PUR	ISO 22196	-				NPD					NPD			NPD	NPD	NPD
VOC	EN ISO 16000-9	µg/m ³		≤ 10 (after 28 days)	≤ 10 (after 28 days)	≤ 10 (after 28 days)	≤ 10 (after 28 days)	≤ 10 (after 28 days)	NPD	≤ 10 (after 28 days)				≤ 10 (after 28 days)		≤ 10 (after 28 days)
WARRANTY		years														



Fatra, a.s.

třída Tomáše Bati 1541
763 61 Napajedla
Czech Republic

Tel.: +420 577 501 111

E-mail: floor@fatra.cz

